

Sewing with Knits



Selecting Your Pattern

- + Look for patterns designed for knits
- + Some patterns have a gauge showing the amount of stretch needed

4" (10cm) OF CROSSWISE FOLDED KNIT MUST STRETCH FROM HERE
(10cm) DE JERSEY PLIÉ SUR LE TRAVERS DOIVENT S'ÉTIRER D'ICI
(10cm) DE TEJIDO DE PUNTO DOBLADO TRANSVERSALMENTE DEBEN ESTIRARSE DESDE ACÁ

TO HERE OR MORE
À AU MOINS LA
HASTA ACÁ O MÁS

M7323

MISSES' TOPS: Pullover tops (close-fitting through bust) have front seam detail and narrow hem. **C, D:** Stitched hem on sleeves. **A, D:** Shaped hemline, wrong side shows. Upper front **C** and middle front **D:** Cut on crosswise grain.

HAUTS POUR JEUNE FEMME: Hauts à passer par la tête (moulants sur la poitrine apparentes devant et ourlet étroit. **C, D:** Ourlet piqué sur les manches. **A, D:** ourlet en forme, l'envers visible. Devant supérieur **C** et partie milieu devant **D:** le fil de trame.

TOPS PARA JÓVENES Y SEÑORAS: Tops para ponerse por la cabeza (ceñidos en con costuras expuestas en el frente y dobladillo angosto. **C, D:** Dobladillo de manga a máquina. **A, D:** Línea de dobladillo con forma, revés visible. Frente superior **C** y fre **D:** Cortados sobre el hilo de la trama.

Combinations: **Y**(XS-S-M), **ZZ**(L-XL-XXL)

Designed for medium weight moderate stretch knits.

SUGGESTED FABRICS: Jersey, Cotton Knit, Interlock, Matte Jersey.

Séries/Combinaciones: **Y**(TP/XP-P/P-M/M), **ZZ**(G/G-TG/XG-TTG/XXG)

Créé pour des tricotés à élasticité moyenne de poids à moyen.

TISSUS CONSEILLÉS: Jersey, Jersey de coton, Interlock, Jersey mat.

Diseñado para telas de punto con elasticidad moderada de peso a mediano.

TELAS SUGERIDAS: Jersey, Tejido de punto de algodón, Interlock, Jersey mat.

SIZES	XS	S	M	L	XL	XXL	
	4-6	8-10	12-14	16-18	20-22	24-26	
A 60**	7/8	7/8	7/8	1	1 1/8	1 1/8	Yds.
B 60**	1	1	1	1 1/8	1 1/8	1 1/8	Yds.
C 60**	1 1/8	1 1/8	1 1/8	1 1/8	1 1/8	1 1/8	Yds.
D 60**	1 1/8	1 1/8	1 1/8	1 1/2	1 1/8	1 1/8	Yds.

FINISHED GARMENT MEASUREMENTS

Width, lower edge

A	40 1/2	42 1/2	46	50	54	58	Ins.
B, C	47	49	52 1/2	56 1/2	60 1/2	64 1/2	"

Back length from base of neck

A	23 1/2	24	24 1/2	25	25 1/2	26	"
B, C	26	26 1/2	27	27 1/2	28	28 1/2	"
D	28	28 1/2	29	29 1/2	30	30 1/2	"

*With Nap **Without Nap ***With or Without Nap

TAILLES/TALLAS	TP/XP	P/P	M/M	G/G	TG/XG	TTG/XXG
	4-6	8-10	12-14	16-18	20-22	24-26
A 150cm*	0.80	0.80	0.80	1.00	1.10	1.30
B 150cm*	1.00	1.00	1.00	1.30	1.50	1.50
C 150cm*	1.30	1.30	1.30	1.80	1.80	1.80
D 150cm*	1.10	1.20	1.30	1.40	1.80	1.80

MESURES DU VÊTEMENT FINI/MEDIDAS DE LA PRENDA ACABADA

Largeur à l'ourlet/Ancho inferior

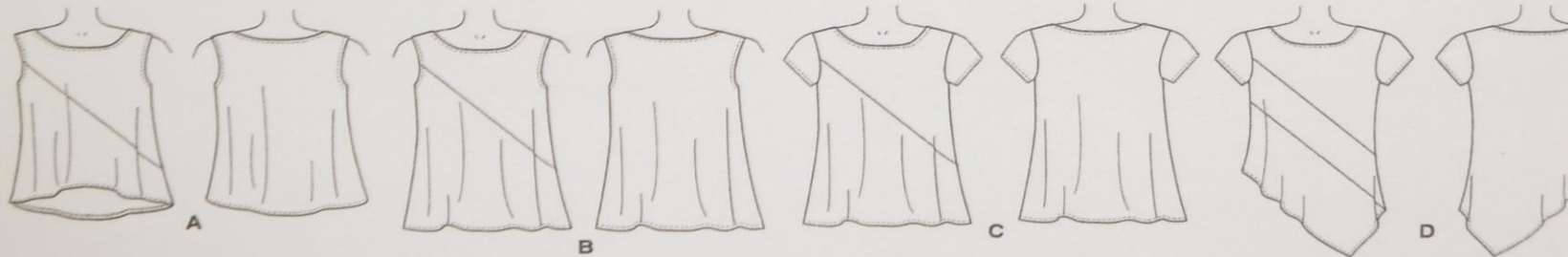
A	103	108	117	127	137	147
B, C	120	125	133	143	154	164

Longueur - dos, votre nuque à l'ourlet/Largo de espalda desde la nuca

A	60	61	62	64	65	66
B, C	66	67	69	70	71	72
D	71	72	74	75	76	78

*Avec Sens **Sans Sens ***Avec ou Sans Sens

*Con Pelillo **Sin Pelillo ***Con o Si



Gauge on back of pattern

4" (10cm) OF CROSSWISE FOLDED KNIT MUST STRETCH FROM HERE
(10cm) DE JERSEY Plié SUR LE TRAVERS DOIVENT S'ÉTIRER D'ICI
(10cm) DE TEJIDO DE PUNTO DOBLADO TRANSVERSALMENTE DEBEN ESTIRARSE DESDE ACÁ



TO HERE OR MORE
À AU MOINS LÀ
HASTA ACÁ O MÁS



Fabric Selection

- + Look at 'Suggested Fabrics' on pattern envelope
- + Direction of the stretch
 - selvage to selvage
 - lengthwise
 - both - two way stretch
- + Test on pattern envelope
- + Recovery test

Pretreating Fabric

- + Treat the fabric the same way you will after the garment is completed
- + Use color catcher
- + Cotton knits will shrink

How to tell the right side of the fabric

- + Cut edge folds to right side when stretched
- + Selvage edge folds to wrong side

Layout of Pattern and Cutting

- + Stretch should go around the body
- + Cut pattern pieces in the same direction (with nap)
- + Fabric should lay flat on the cutting table, should not be pulled from hanging over the edge of the table
- + Scissors and pins can distort the fabric
- + Weights and a rotary cutter

Layout and Cutting [continued]

- + Make clips into the fabric for notches, center front or any other markings that come to the end of the fabric
- + Other markings, such as darts, can be done with chalk or fabric marking pen or pencil
- + Verify seam allowance

What to Stabilize

- + Shoulders

- + Neckline

- + Armholes

 - Very stretchy fabric

- + Side seam

 - Very stretchy fabric

Design Plus ULTRA-SOFT
DOUBLE
SIDED
FUSIBLE

A "MUST HAVE" Sewing Notion!

All you need is your iron to:
HEM FINE FABRICS
CONTROL KNIT HEMS
CREATE FUSIBLE TRIM & BIAS
POSITION ZIPPERS
MATCH PLAIDS AND STRIPES
STABILIZE BUTTON HOLES

Machine Wash or Dry Clean • 3/4" x 27 yard roll
Another fine product from L.J. Designs
www.TheSewingPlace.com

Sewkeys E
FUSIBLE • DOUBLE SIDED • FUSIBLE • DOUBLE SIDED
EXTREMELY FINE
Double Sided Fusible Stay Tape

1" x 25 Yard Roll

Home • Quilting
Patch Panels • Hoopings • Topstitching
Applique

Enter Sewbrooks # 41
Contact Us & Visit 2 Sewing Shows This Year!
Tel: 202-224-2319 • Fax: 202-224-2322
sewkeys@the SewingPlace.com • www.theSewingPlace.com

Londa's Creative Threads
STRAIGHT • STRAIGHT • STRAIGHT
EXTREMELY FINE FUSIBLE
Straight Stay Tape
NATURAL

USES:
Stabilize all Straight and Round edges on Quilting
sandwiches. Applies as directed by Londa's fabric books,
patterns, and DVDs.
Stabilize shoulder straps and pocket edges on garments.

1/4" x 25 Yard Roll
Contact Londa for more fabric and dress making books!
Londa Koblitz
Creative Sewing Designer / Owner
Phone: 402-934-4187
Email: londakoblitz@sewing.com
www.londas-sewing.com

Design Plus SUPER FINE
BIAS
FUSIBLE
STAY TAPE
BLACK BLACK BLACK BLACK

A "MUST HAVE" Sewing Notion!

CONTROL BIAS SEAMS
CURVE & CURVED NECKLINE & ARM HOLE
ARMHOLE CONTROL & BUST DUMPER STAY
CONTROL FRAYING FABRIC & SUPER FINE CONTROL
BIAS POLYESTER

Machine Wash or Dry Clean • 3/4" x 27 yard roll

+ Different brands and types of Stay Tapes





Needle and Thread

- + Universal needle
- + Ballpoint (also called Jersey)
 - Cotton knits, fleece, rib knits, double knits and most other knit fabrics
- + Stretch
 - Ideal for knits with 2 way stretch
 - Specially designed with scarf and eye to prevent skipped stitches
- + Polyester thread
- + Polyester core with cotton wrapping thread

SCHMETZ

Fleece Needles
Aiguilles Polaires
Agujas de vellón



5
PC/PZ



Art. 1727

B

SCHMETZ

Jersey/Ball Point Needles
Aiguilles Jersey/Pointe à Bille
Aguja para Jersey/Punta Bola



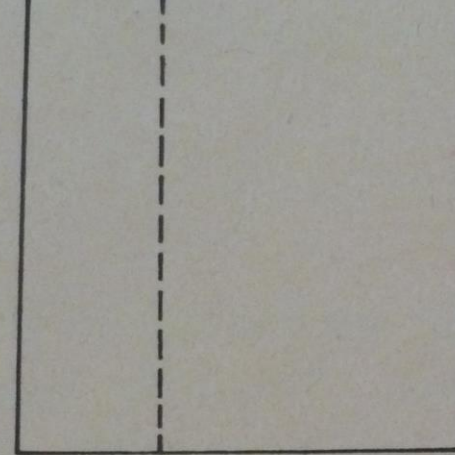
5
PC/PZ

Sewing Machine

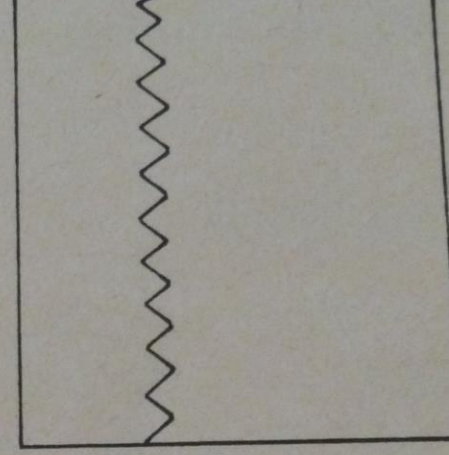
- + Presser foot pressure
 - Reduce the pressure
- + Walking Foot or even feed
- + Stitch type or length
 - Stretch stitch
 - Straight Stitch with length of 3.5
 - Zigzag stitch, set width at 1mm and length at 2.5
 - Multiple zigzag stitch
- + Stretch as you sew

Stitches on Sewing Machine

4

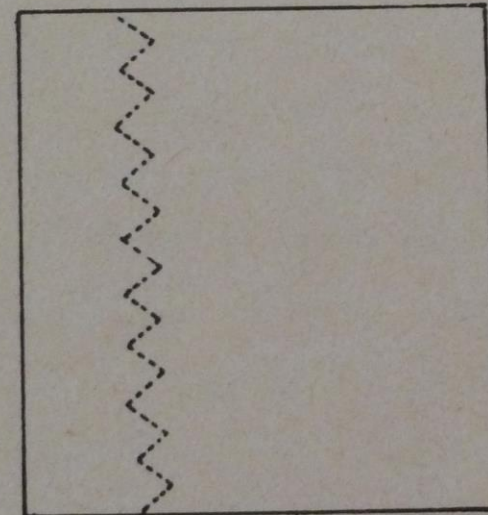


straight
stitch

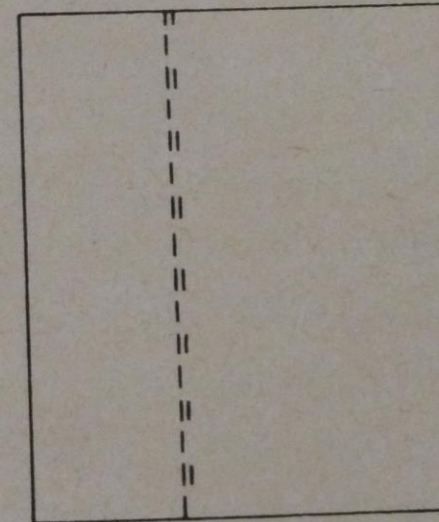


zigzag
stitch

6



multiple zigzag
stitch



straight stretch
stitch

Serger

- + Seam has give (stretch)
- + Differential feed
- + Presser foot pressure
- + 3 thread
 - Strong seam for denser fabrics
 - Left needle for wider seam
 - Right needle for a narrower seam
- + 4 thread
 - Adds an extra row of stitching, making it stronger
 - Excellent for a seam that will stretch during wear
 - Ideal for sweater knits

Sleeve

+ Flat Method

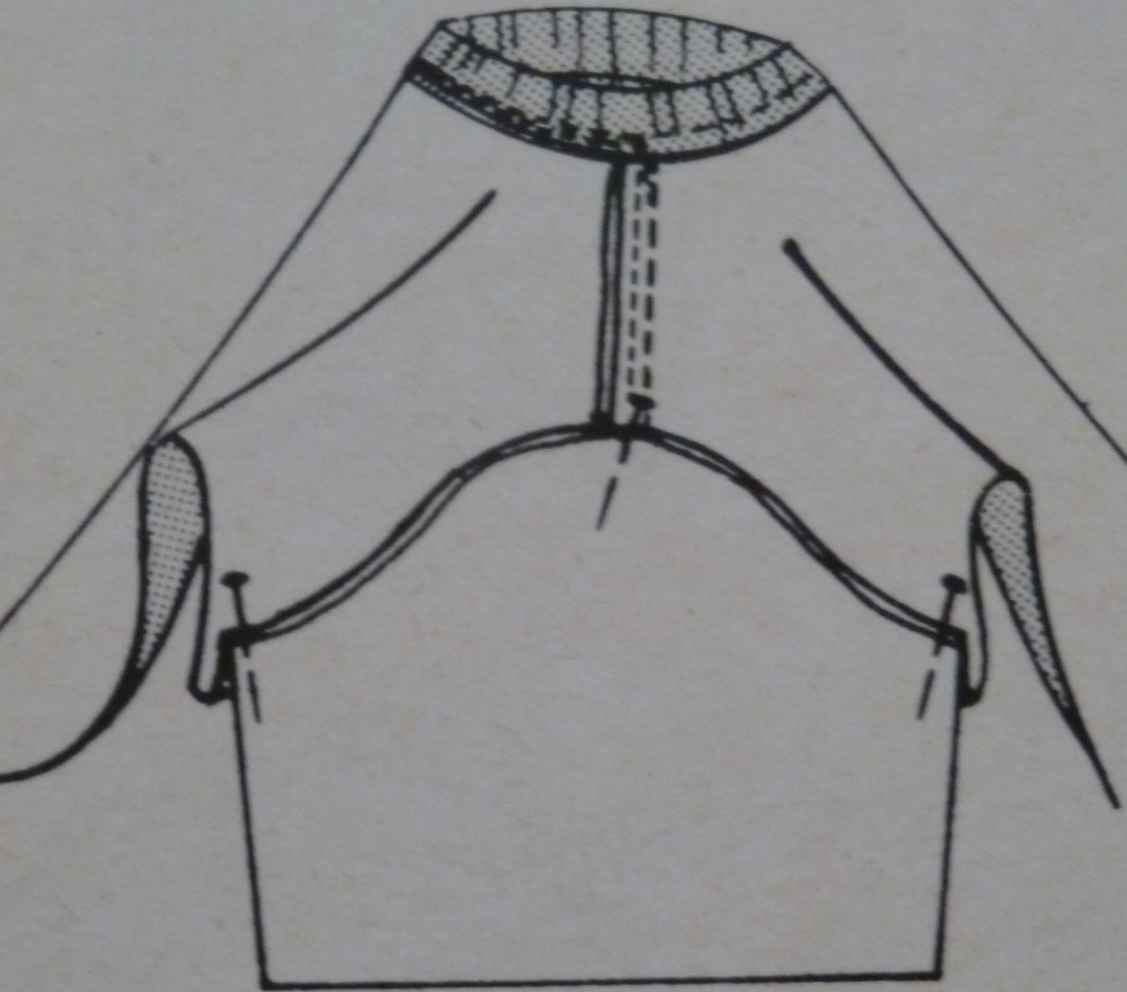
Attach front and back at shoulder seams

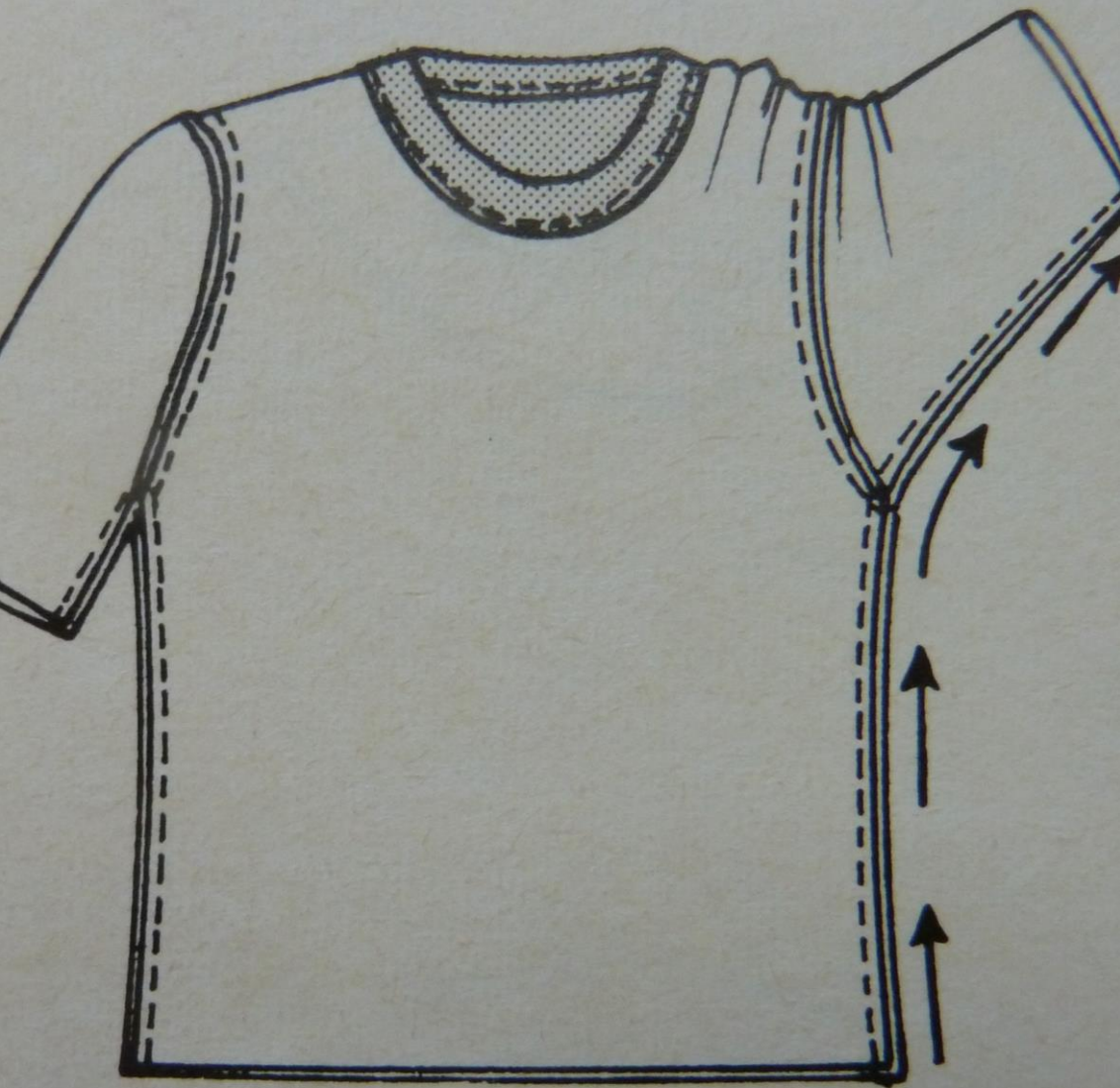
Do not stitch the side seam or sleeve seam

Pin at shoulder seam and notches

Slightly stretch to fit the sleeve in

Flat Method to Insert Sleeve





Sew Side seam after inserting sleeve

Hemming

- + Depends on fabric and design
- + Very stretchy fabric let hang overnight before hemming
- + Knits don't ravel, edge can be left unfinished
- + Rolled hem
- + Cover stitch
- + Blind hem on sewing machine
- + Sewing Machine
 - Double needle

Sewkeys E
BY EMMA SEABROOKE

FUSIBLE • DOUBLE SIDED • FUSIBLE • DOUBLE SIDED

EXTREMELY FINE
Double Sided Fusible Stay Tape

CLEAR

USES:

Hems • Zippers
Kick Pleats • Neckline in Tiny Pleats
Apply Trims

1" x 25 Yard Roll

Contact Emma for more notions and other Sewkeys E products!

Emma Seabrooke, C.S.I.
Certified Fit & Pant • Palmer/Pletsch Instructor

Design Plus™

ULTRA-SOFT
DOUBLE
SIDED
FUSIBLE

A "MUST HAVE" Sewing Notion!

All you need is your iron to:

HEM FINE FABRICS
CONTROL KNIT HEMS
CREATE FUSIBLE TRIM & BIAS
POSITION ZIPPERS
MATCH PLAIDS AND STRIPES
STABILIZE BUTTON HOLES

Machine Wash or Dry Clean • 3/8" x 27 yard roll

Another fine product from L.J. Designs
www.TheSewingPlace.com



Hot Ruler

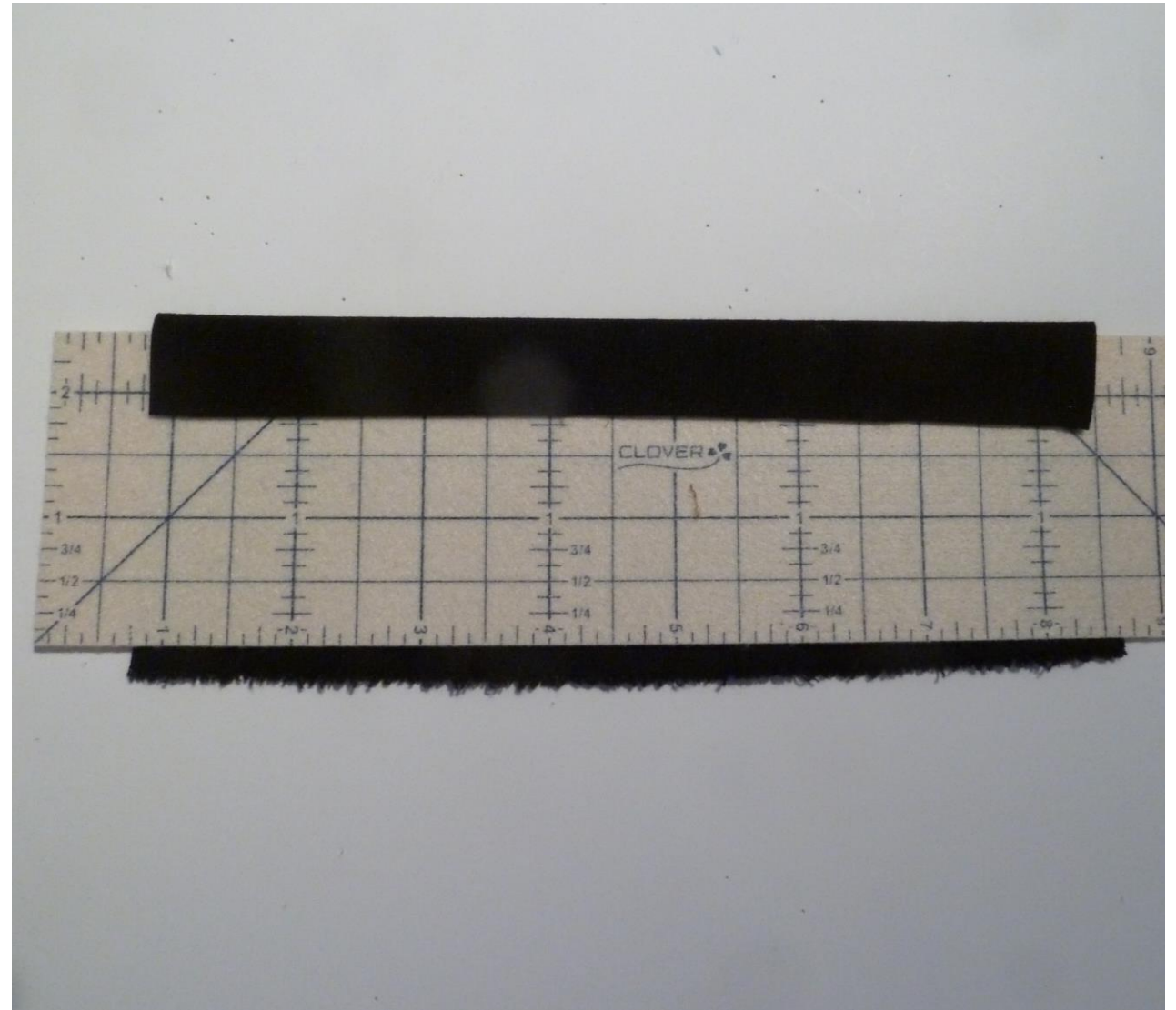
Measure, mark, fold, press

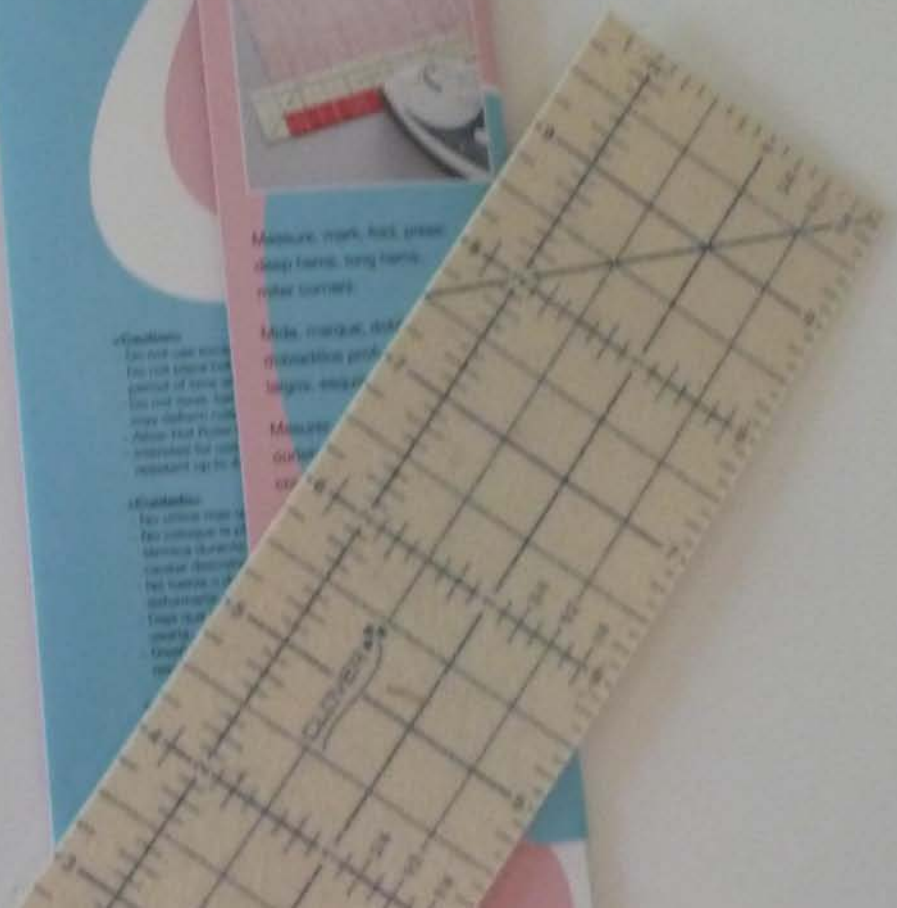
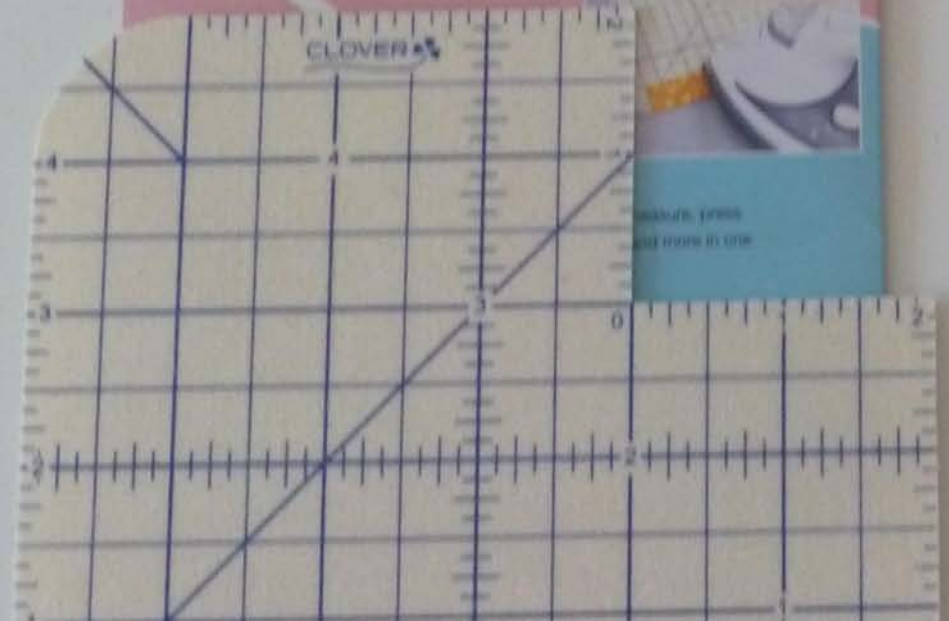
Heat Resistant, press directly on ruler

Thin and Accurate

Dry or steam irons

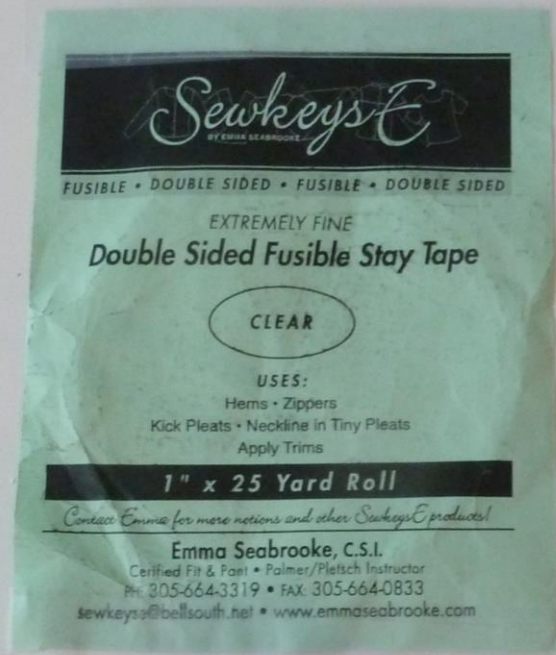
Non-slip surface holds fabric in place of precise results





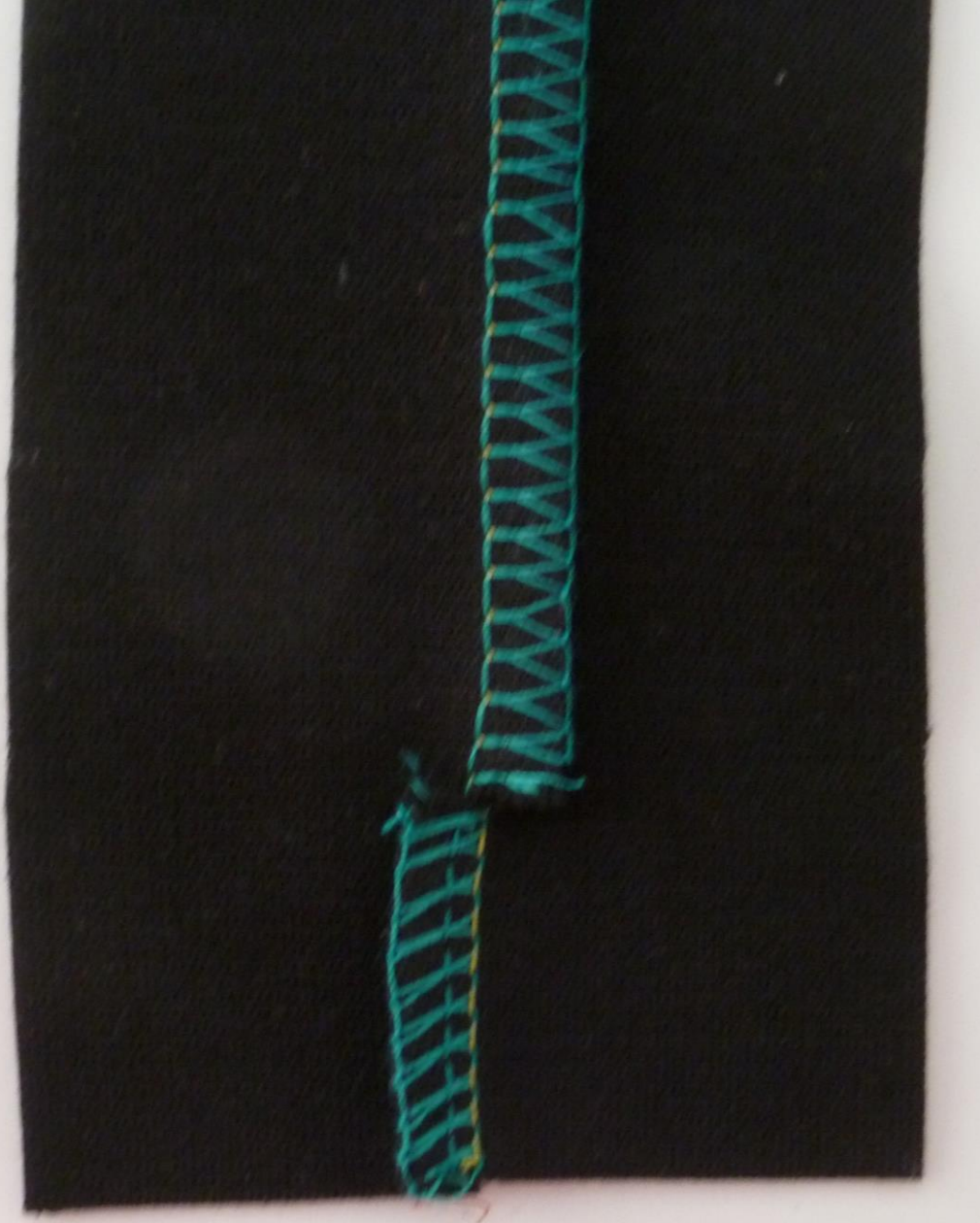


Stay tape for straight hemlines



+ Stay Tape on Curved Hemline

Make clips in stay tape to allow it to curve along with the hemline

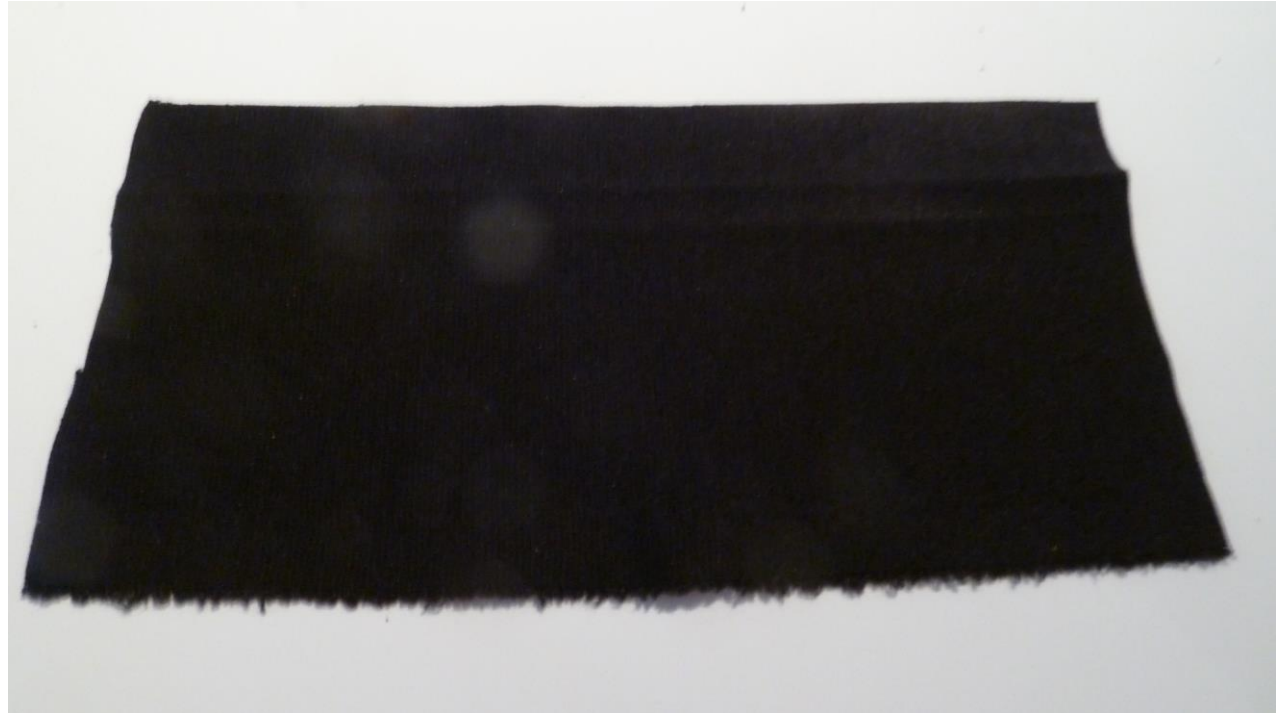


To Reduce Bulk at Hem

At hem line make a small clip almost to the seam. Fold the seam below the hemline to the opposite direction and press.



- + Use the selvage as your hem



The Ann Person[™] Method



The *Stretch & Sew* Sewing Book

By Ann Person



A PALMER/PLETSCH PUBLICATION

Knits

for Real People

FITTING AND SEWING
FASHION KNIT FABRICS

Susan Neall
& Pati Palmer

